

Certificate of Analysis

Product description	1000mg (10%) MCT Peppermint
Batch number	TE280621MP
Manufacturing date	28 Jun 21
Expiry date	31 Dec 22
Analysis date	29 Jun 21
Test method	HPLC High Sensitivity, LOD \leq 0.21, LOQ \leq 0.64 ppm for all targets
Storage	Ambient

Compound	Results (%)	Results (mg/ 10ml)
Cannabidivarin (CBDV)	0.076	7.552
Cannabidiolic Acid (CBDA)	\leq LOQ	\leq LOQ
Cannabigerolic Acid (CBGA)	\leq LOQ	\leq LOQ
Cannabigerol (CBG)	\leq LOQ	\leq LOQ
Cannabidiol (CBD)	10.607	1060.694
Tetrahydrocannabivarin (THCV)	\leq LOQ	\leq LOQ
Cannabinol (CBN)	\leq LOQ	\leq LOQ
d9-Tetrahydrocannabinoid (d9-THC)	\leq LOQ	\leq LOQ
d8-Tetrahydrocannabinoid (d8-THC)	\leq LOQ	\leq LOQ
Cannabichromene (CBC)	\leq LOQ	\leq LOQ
Tetrahydrocannabinolic acid (THCA)	\leq LOQ	\leq LOQ
Total CBD (CBD+(CBDA x 0.877))	10.607	1060.694
Total THC (d9-THC+(THCA x 0.877))	\leqLOQ	\leqLOQ

Tested by:

Luca Guizzardi 05/06/21

Luca Guizzardi / QC Analyst

Reviewed by:

Evelin Rauscher 05/06/21

Evelin Rauscher / QA Coordinator

These are compliant under E/C Food supplement regulation which applies across the EU and in the UK. They also cover any guidance provided by EU or UK. As a food supplement we can verify that Golfer's CBD products do not fall under the Misuse of Drugs Act 1971 as no products contain any substances that are listed as controlled substances (including THC). All of the products test for non-detectable levels of THC which is verified by certificates of analysis.

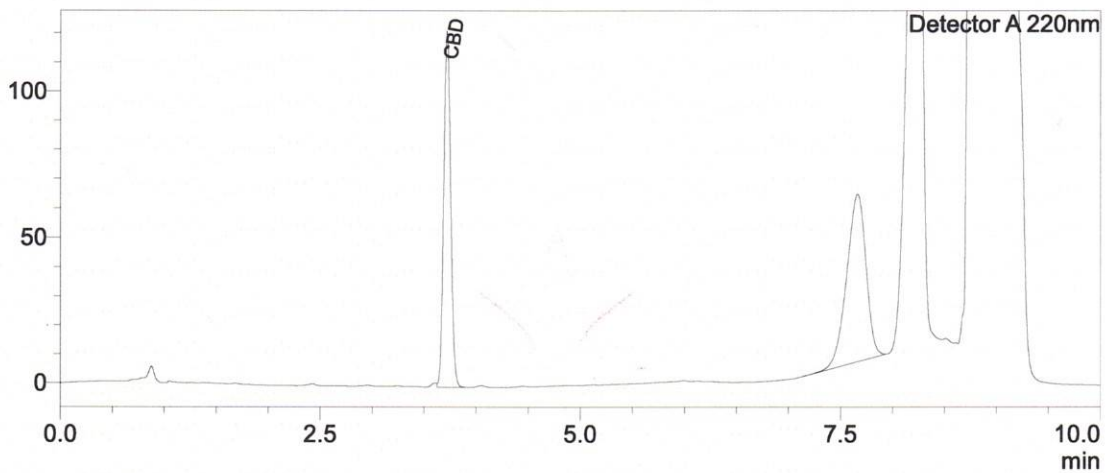


Sample Information

Sample Name : TE280621MP
 Sample ID : B
 Data Filename : Analysis_TE280621MP_B.lcd
 Method Filename : HighSensitivity Liquid Samples.lcm
 Batch Filename : Analysis20210629_133052-009.lcb
 Sample Type : Unknown
 Level : 1
 Dilution Factor : 4050
 Vial # : 1-19
 Injection Volume : 10 uL
 Date Acquired : 29/06/2021 13:31:18

Chromatogram

mV



Quantitative Results

Detector A

ID#	Name	Ret. Time	Area	Conc. ppm
1	CBDV	--	--	0.00
2	CBDA	--	--	0.00
3	CBGA	--	--	0.00
4	CBG	--	--	0.00
5	CBD	3.720	566153	106069.36
6	THCV	--	--	0.00
7	CBN	--	--	0.00
8	d9-THC	--	--	0.00
9	d8-THC	--	--	0.00
10	CBC	--	--	0.00
11	THCA	--	--	0.00

Percentage and mg based on 10 mL bottle

Total THC	0.00	%
Total THC	0.00	mg
Total CBD	10.61	%
Total CBD	1060.69	mg

**Total THC
d9-THC and THCA combined**

**Total CBD
CBD and CBDA combined**

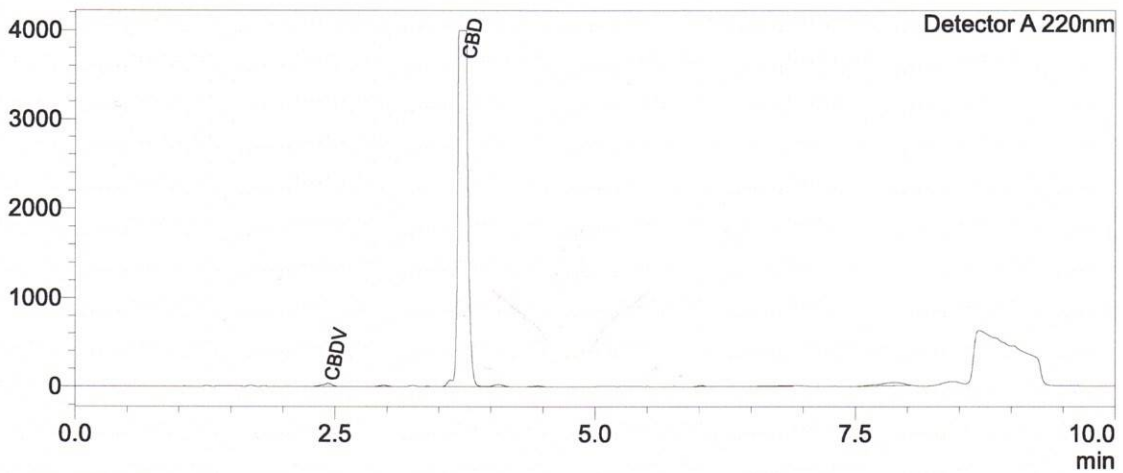


Sample Information

Sample Name : TE280621MP
 Sample ID : A
 Data Filename : Analysis_TE280621MP_A.lcd
 Method Filename : HighSensitivity Liquid Samples.lcm
 Batch Filename : Analysis20210629_134253-009.lcb
 Sample Type : Unknown
 Level : 1
 Dilution Factor : 81
 Vial # : 1-20
 Injection Volume : 10 uL
 Date Acquired : 29/06/2021 13:43:19

Chromatogram

mV



Quantitative Results

Detector A

ID#	Name	Ret. Time	Area	Conc. ppm
1	CBDV	2.437	210855	755.18
2	CBDA	--	--	0.00
3	CBGA	--	--	0.00
4	CBG	--	--	0.00
5	CBD	3.755	26646382	99942.66
6	THCV	--	--	0.00
7	CBN	--	--	0.00
8	d9-THC	--	--	0.00
9	d8-THC	--	--	0.00
10	CBC	--	--	0.00
11	THCA	--	--	0.00

Percentage and mg based on 10 mL bottle

Total THC	0.00	%
Total THC	0.00	mg
Total CBD	9.99	%
Total CBD	999.43	mg

**Total THC
d9-THC and THCA combined**

**Total CBD
CBD and CBDA combined**